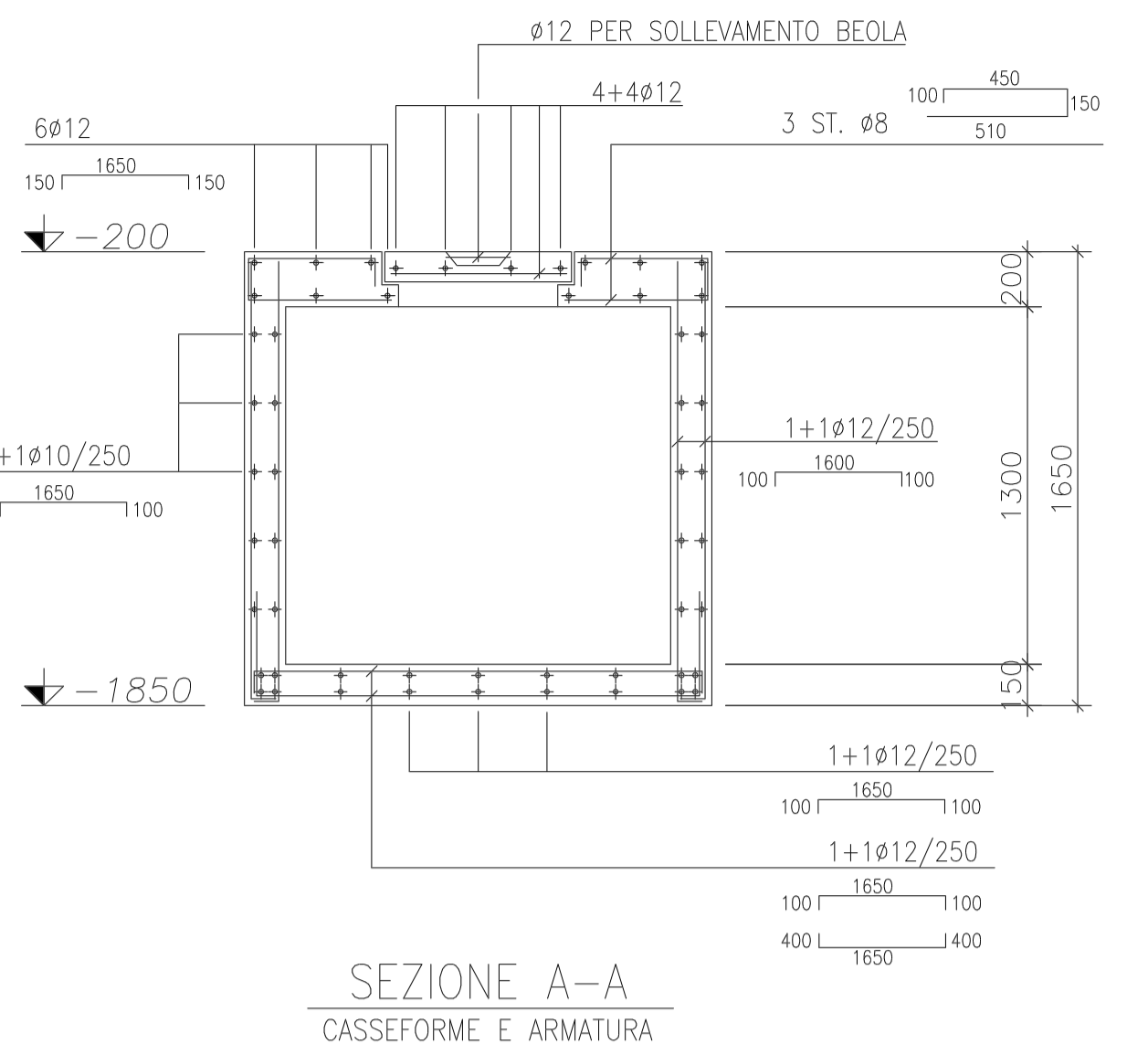
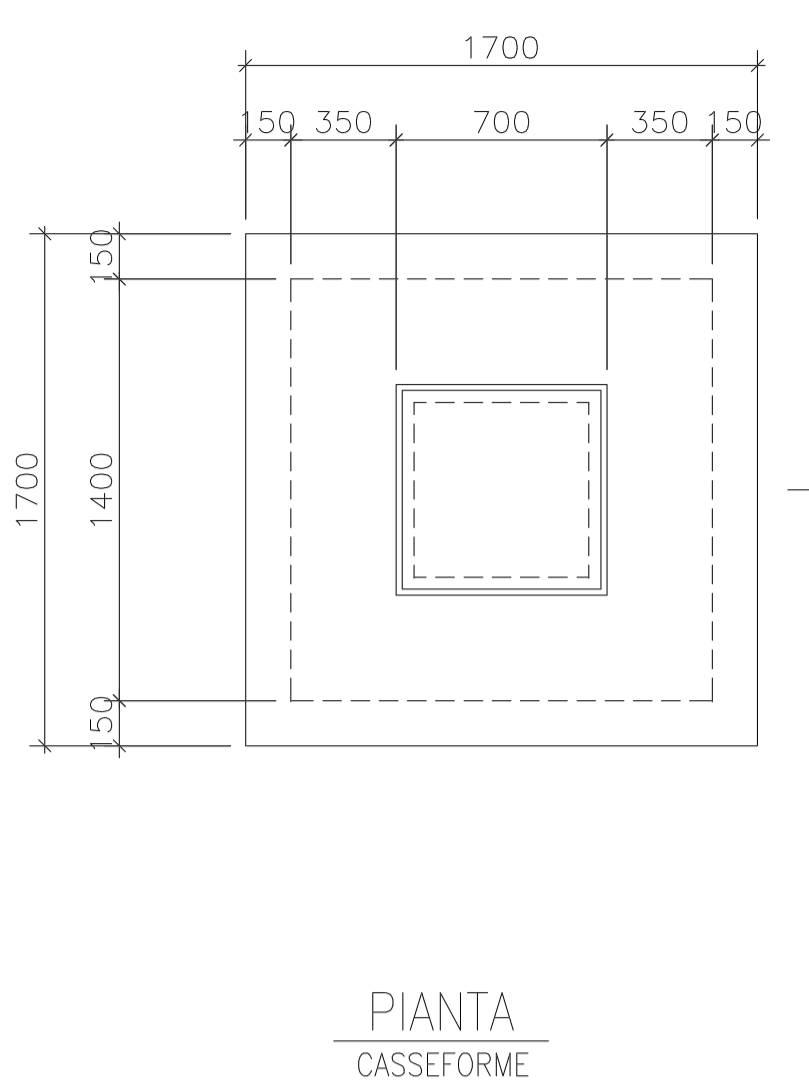
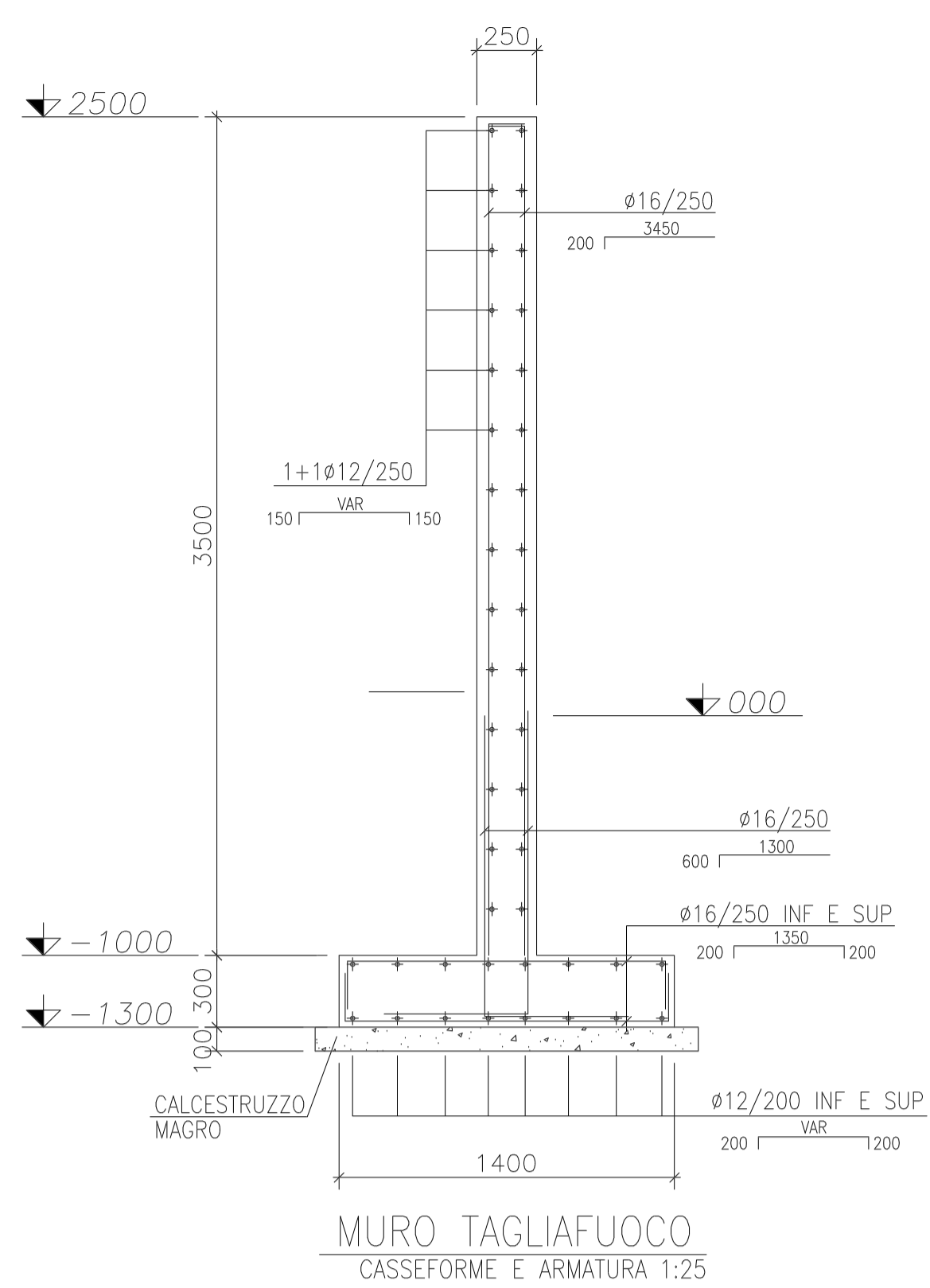
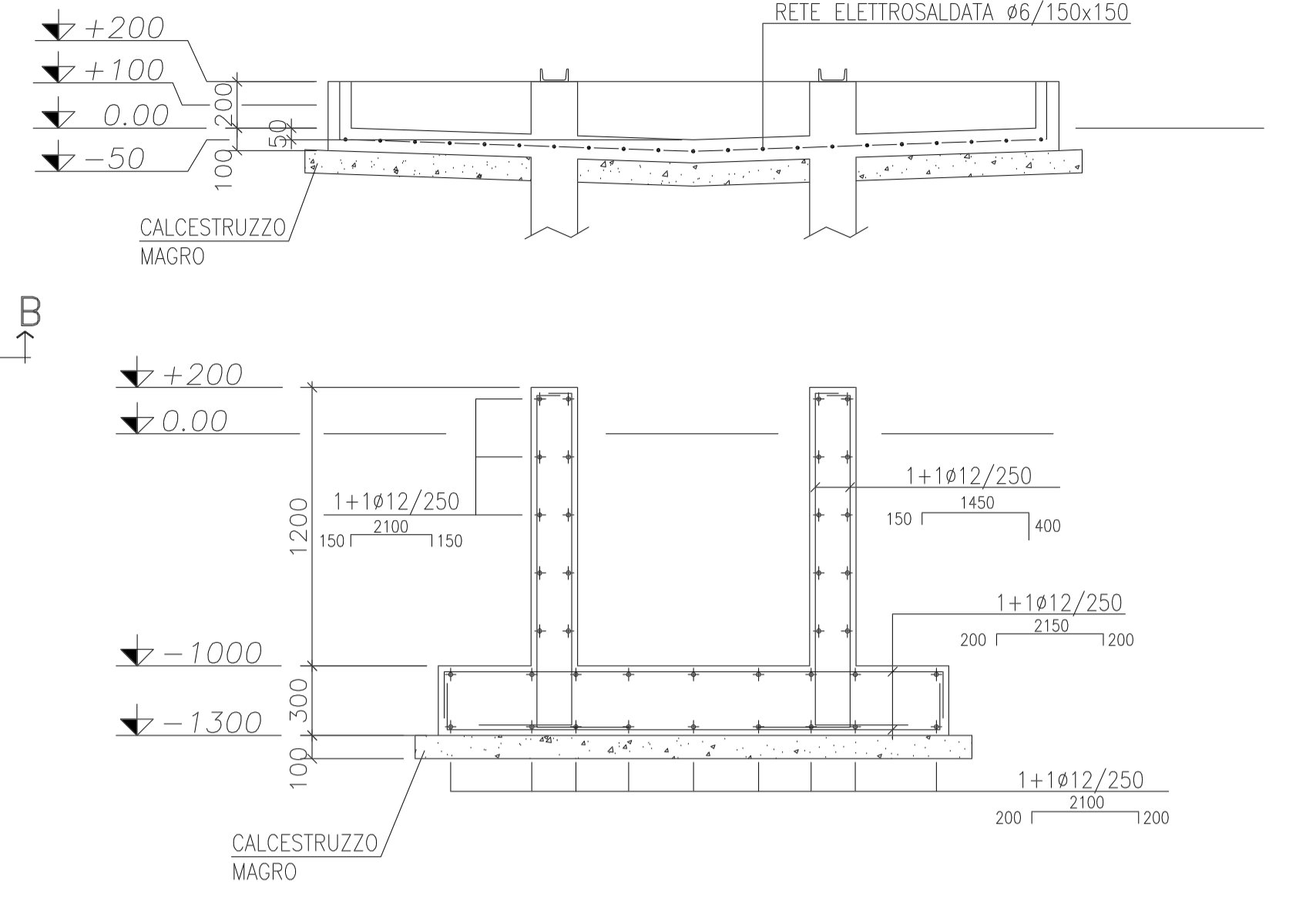
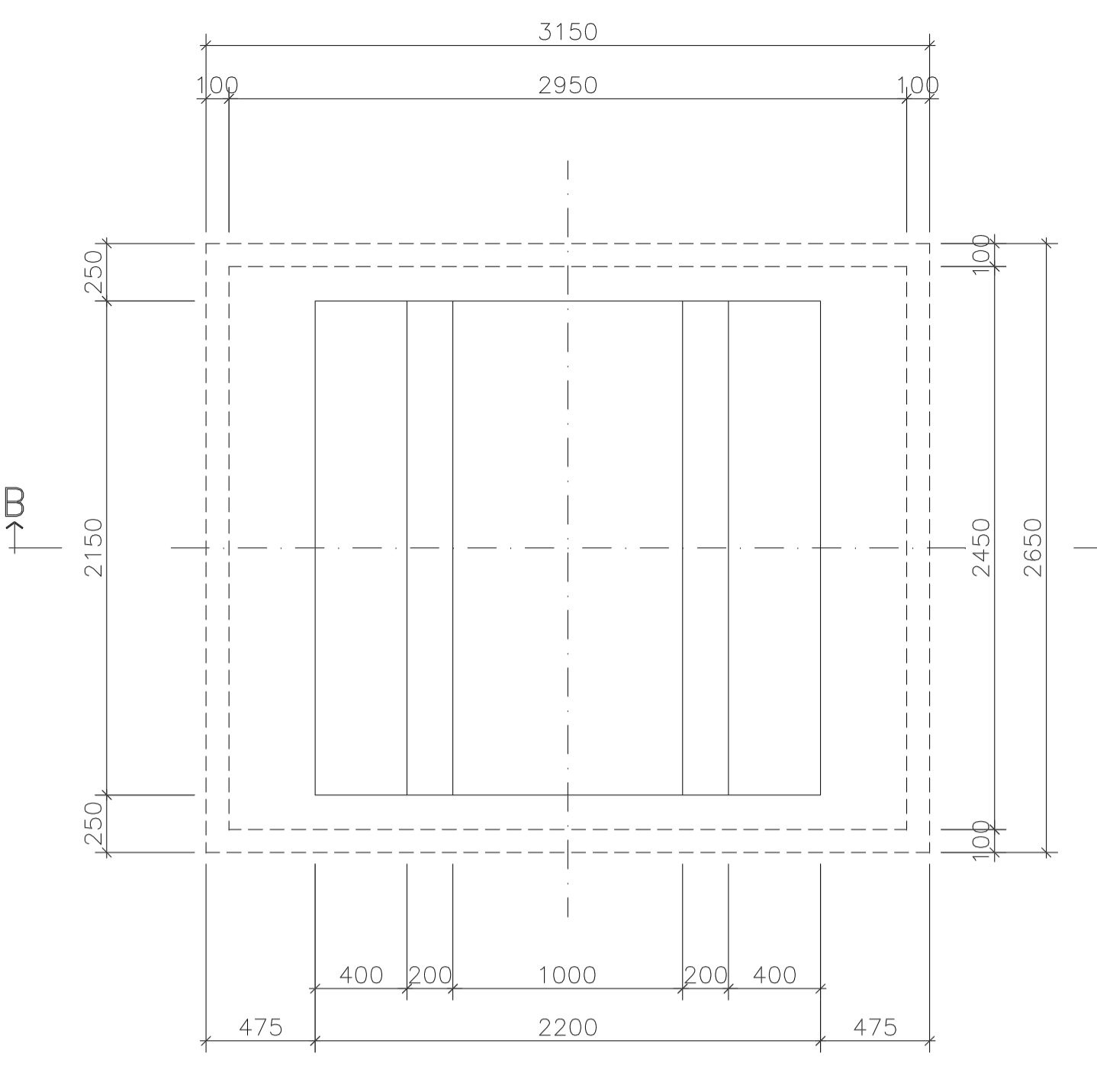


NOTE GENERALI
VEDERE DIS. 30-CE-A-12054

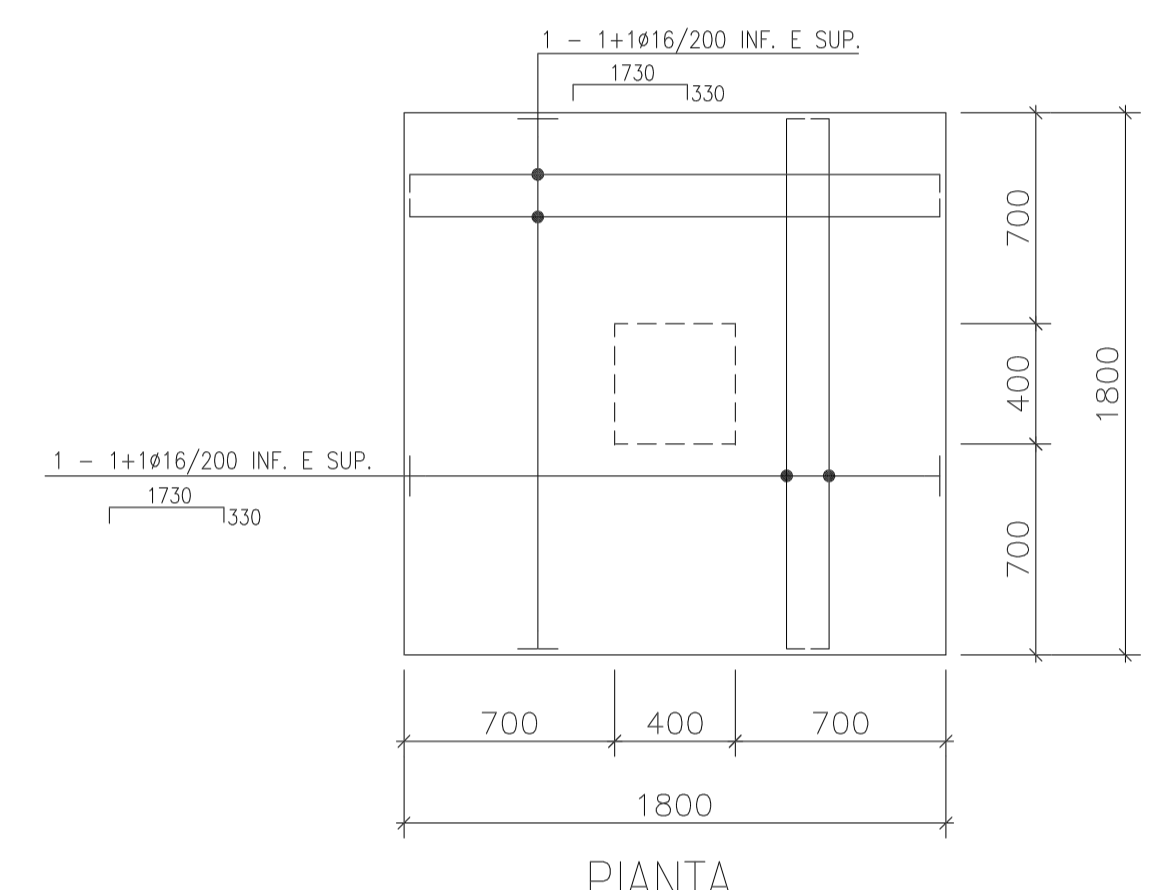


POZZETTO RACCOLTA OLIO
1:25

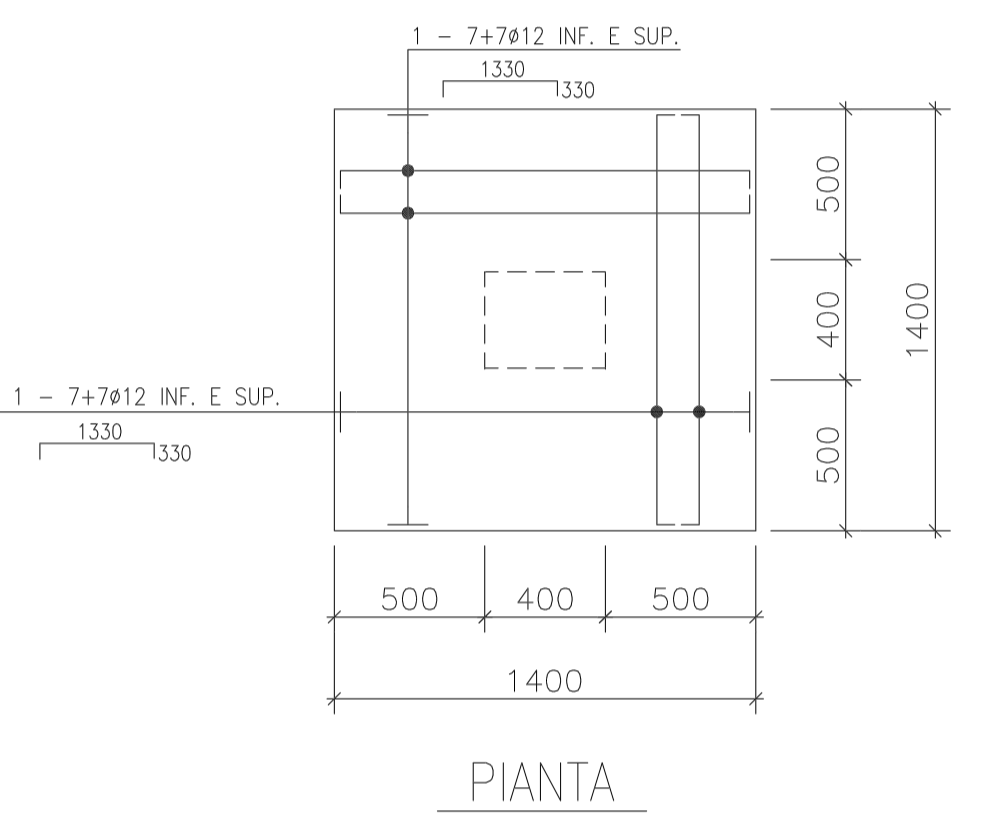
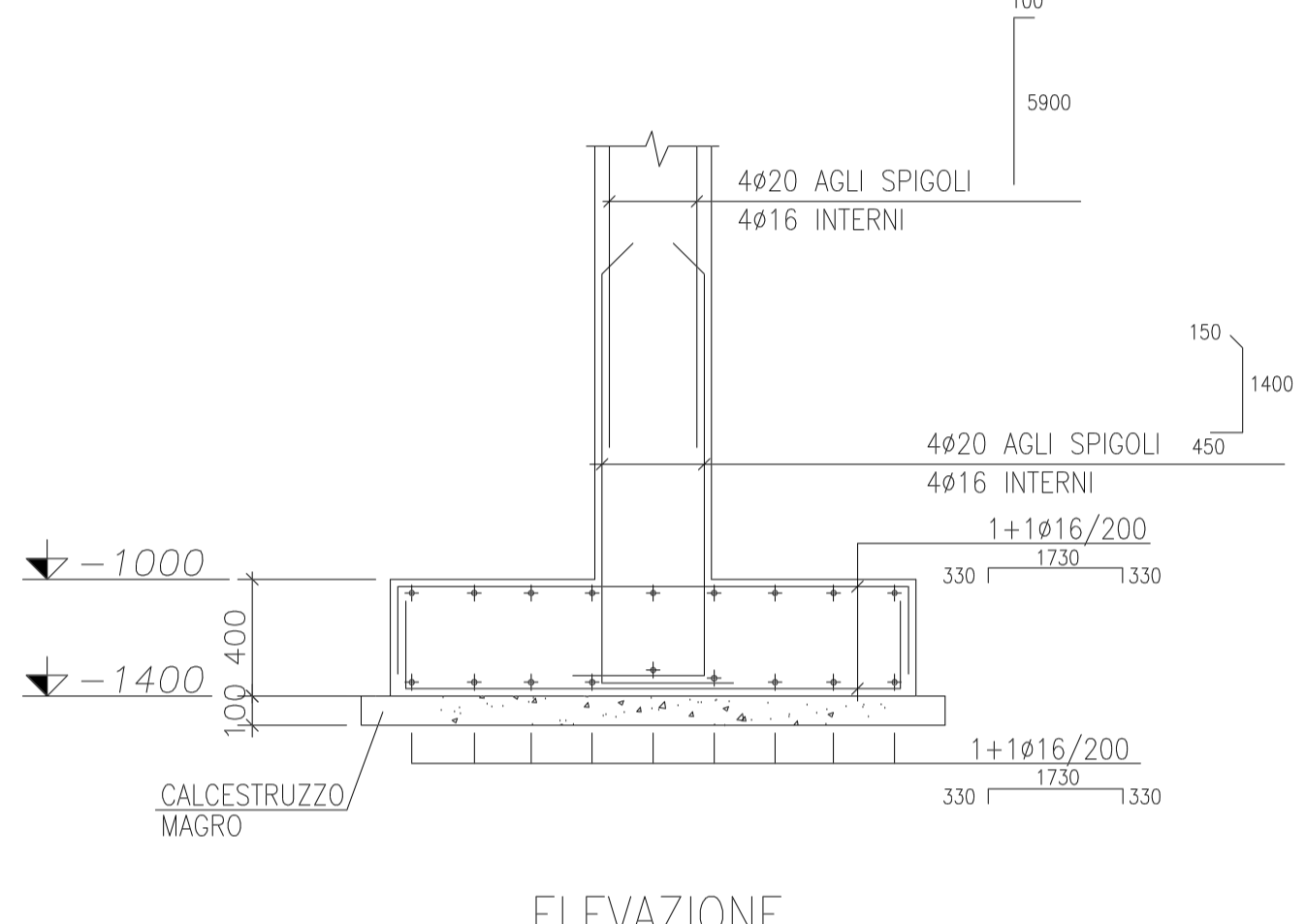


FONDAZIONE TRASFORMATORE 2200x2150
1:25

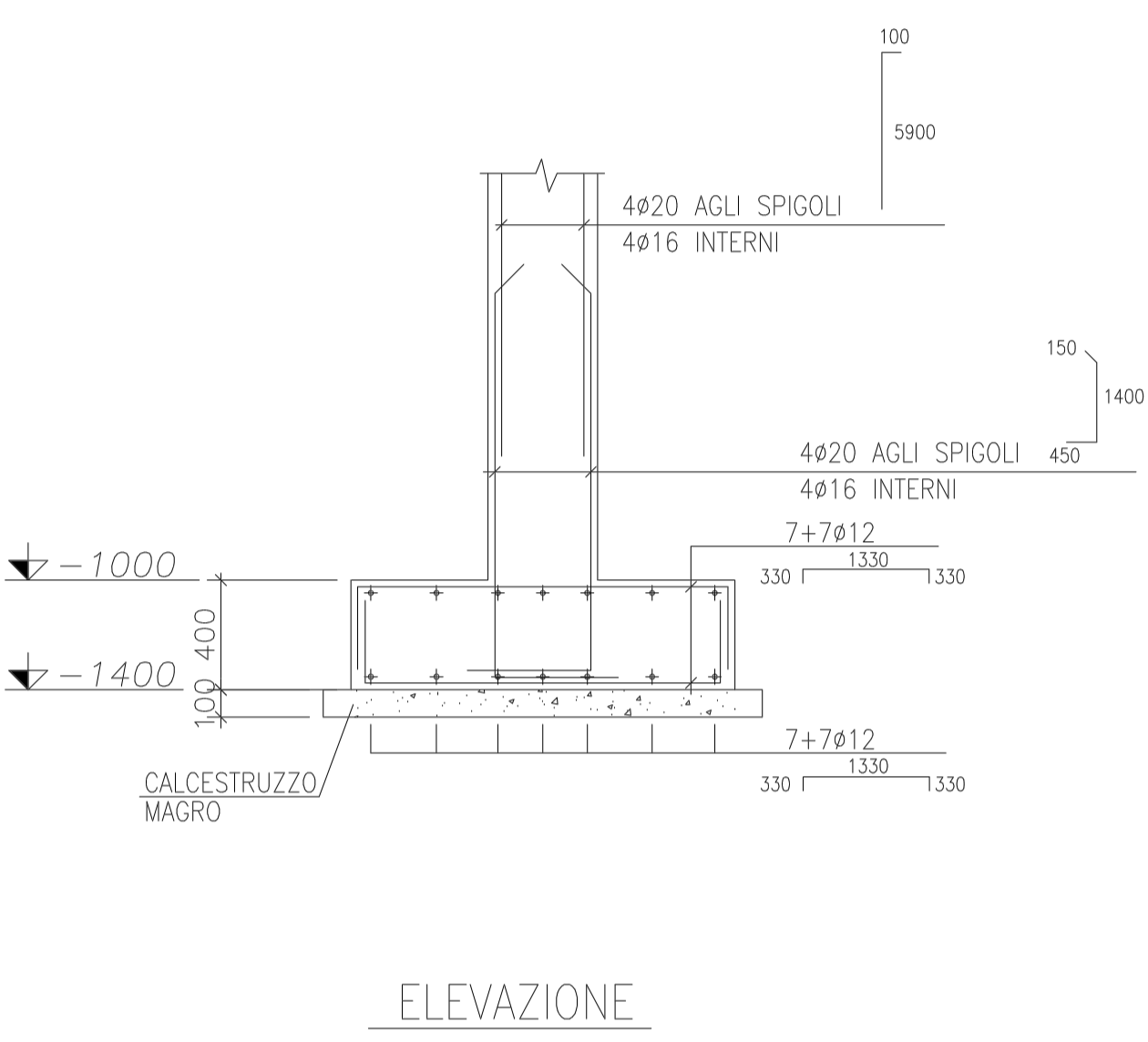
N.B.: LE DIMENSIONI SONO INDICATIVE E DA DEFINIRE ALL'ACQUISTO DEI TRASFORMATORI



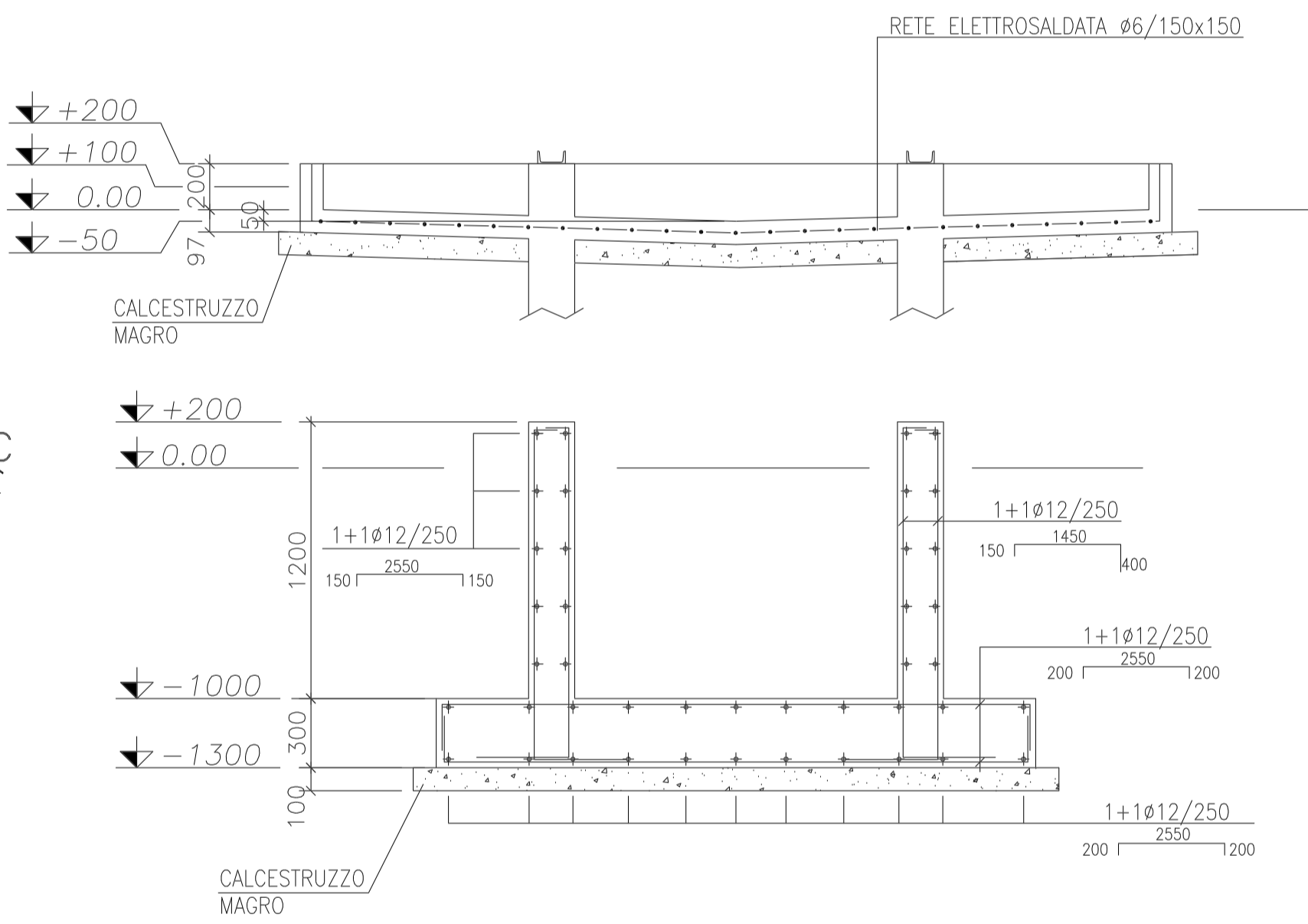
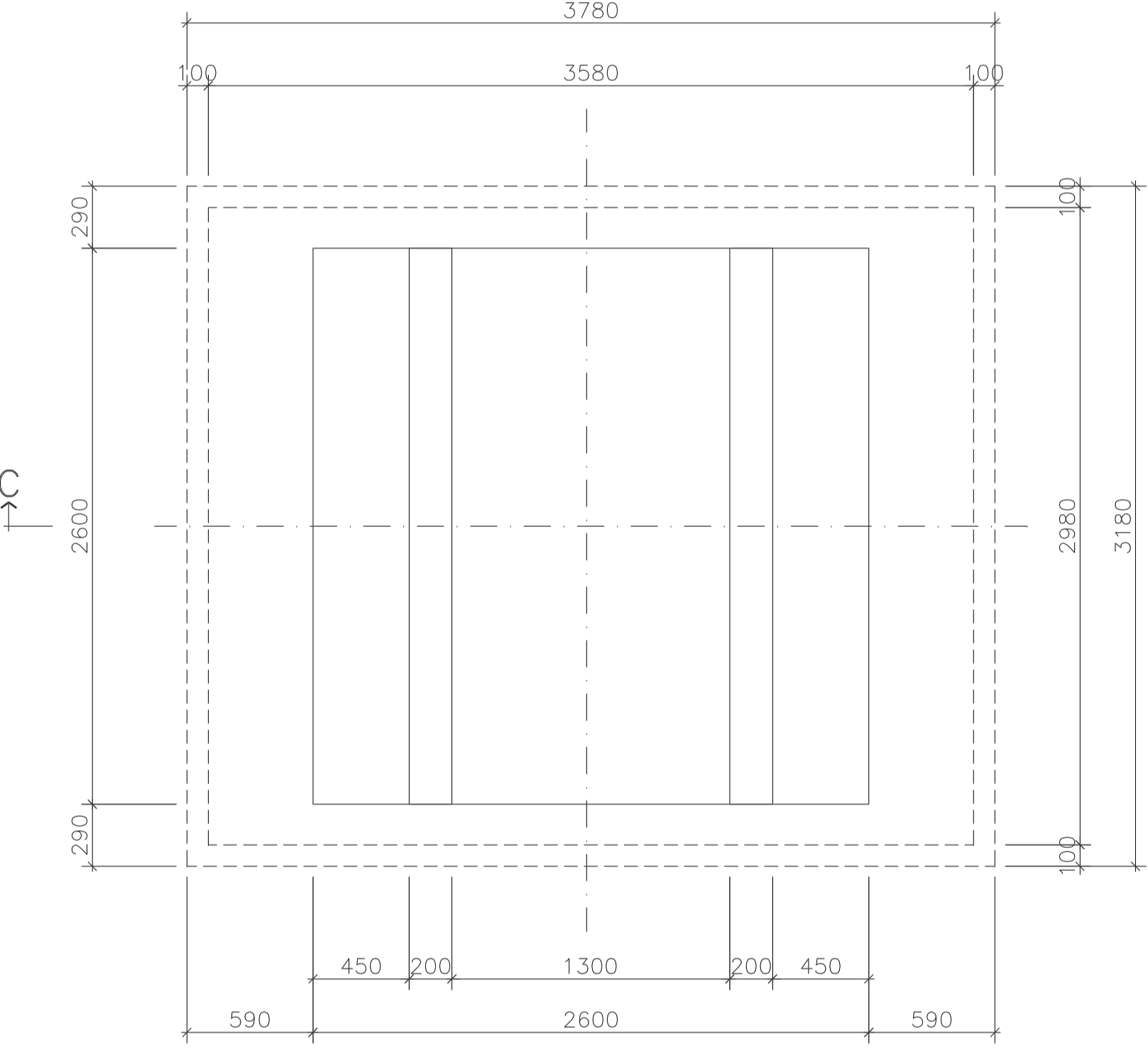
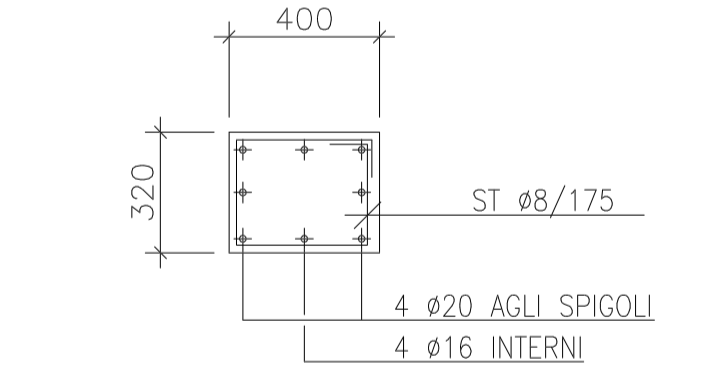
PLINTO TIPO "A"
CASSEFORME E ARMATURA 1:25



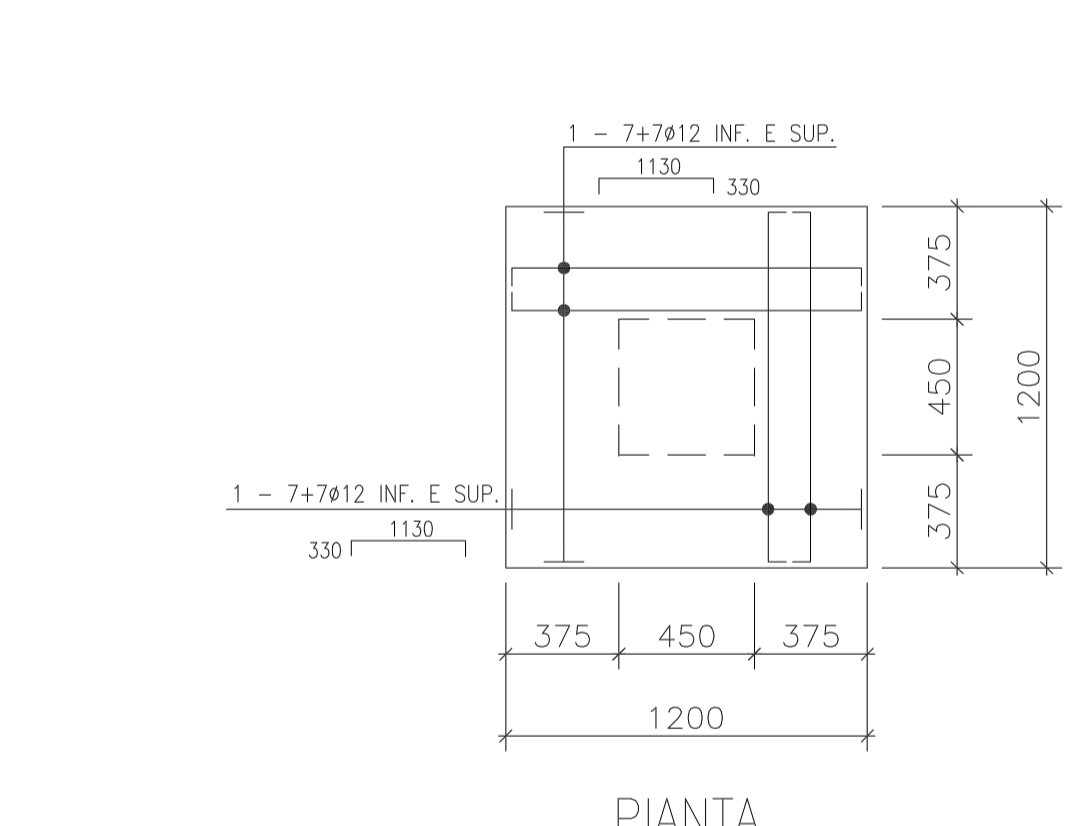
PLINTO TIPO "B"
CASSEFORME E ARMATURA 1:25



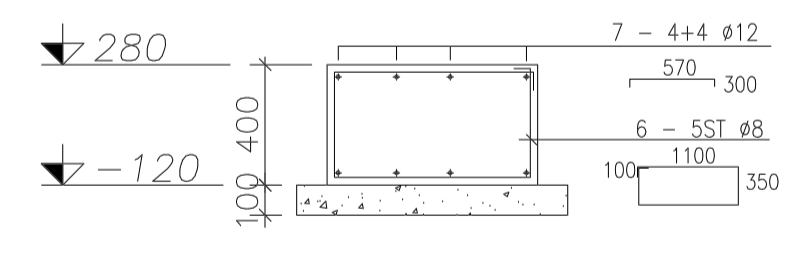
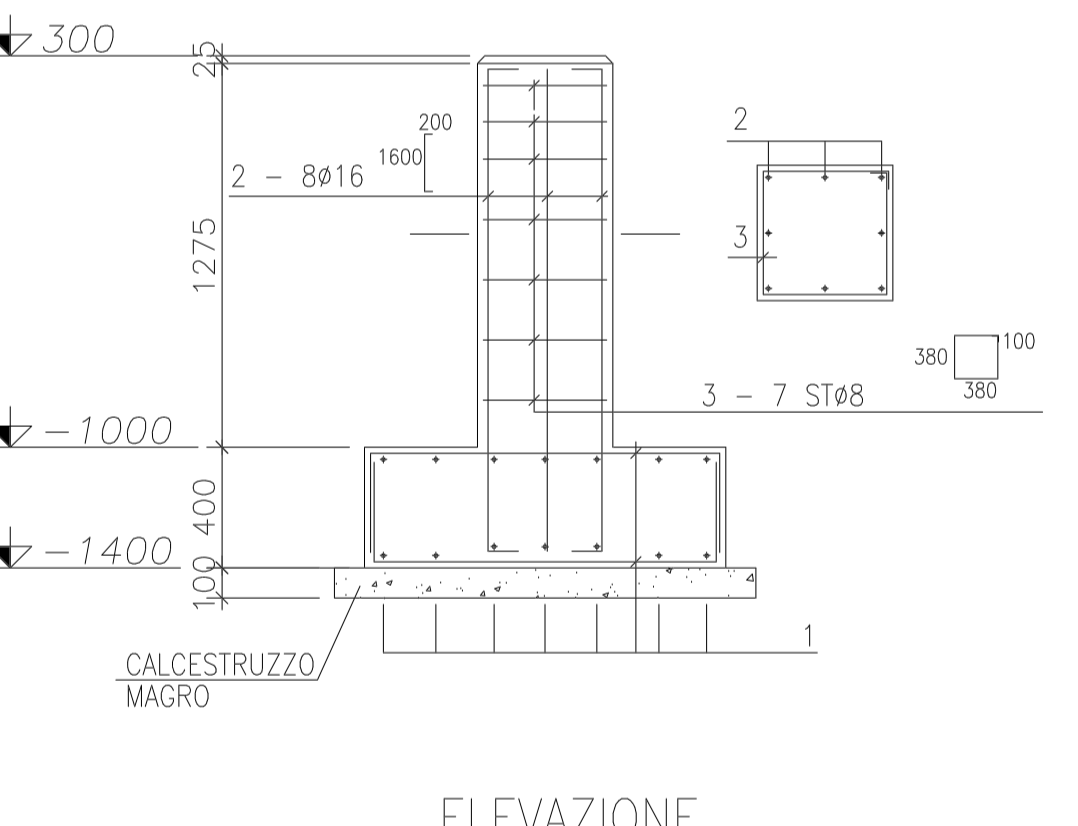
PIL. 1, 15-31, 45
ARMATURA TIPICA PER TUTTA L'ALTEZZA 1:20



FONDAZIONE TRASFORMATORE 2600x2600
1:25

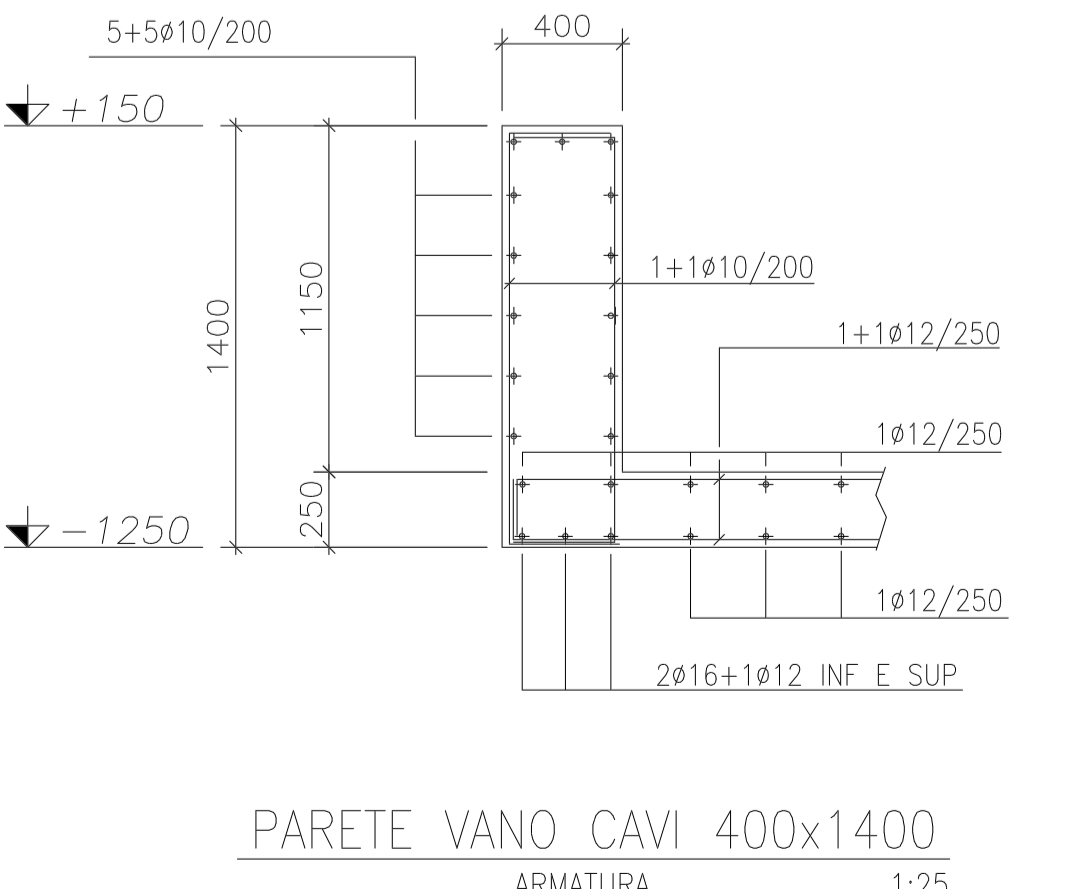
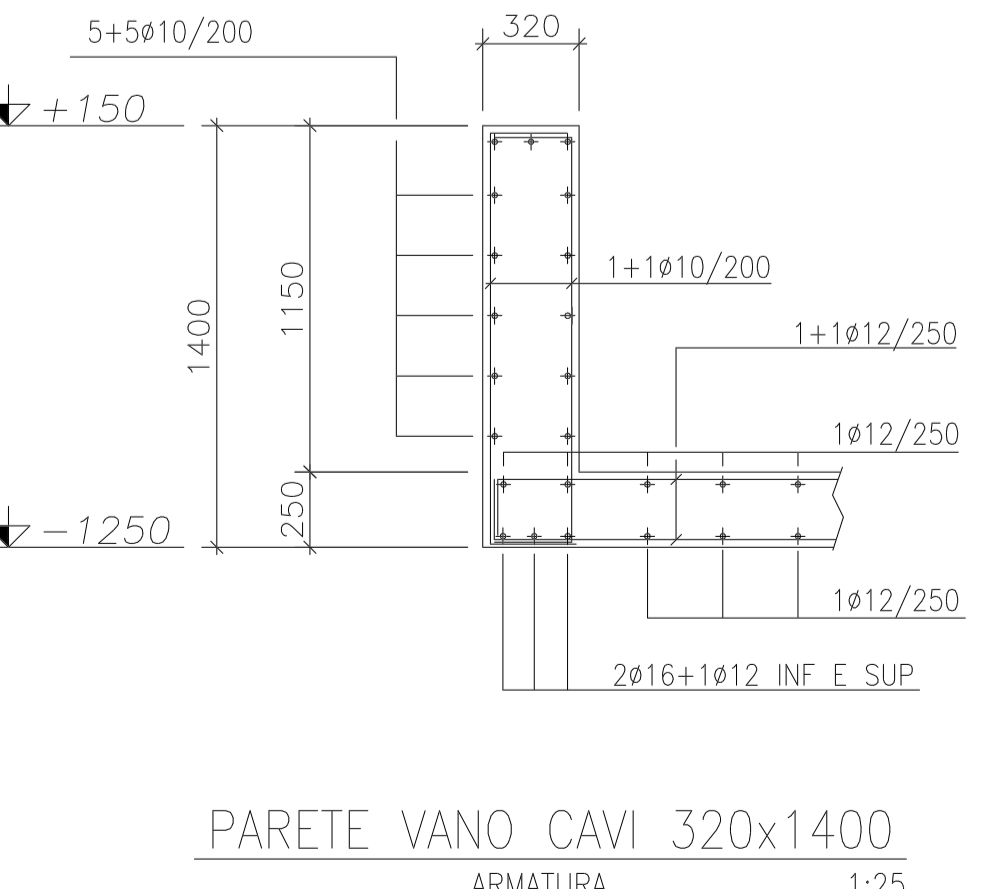
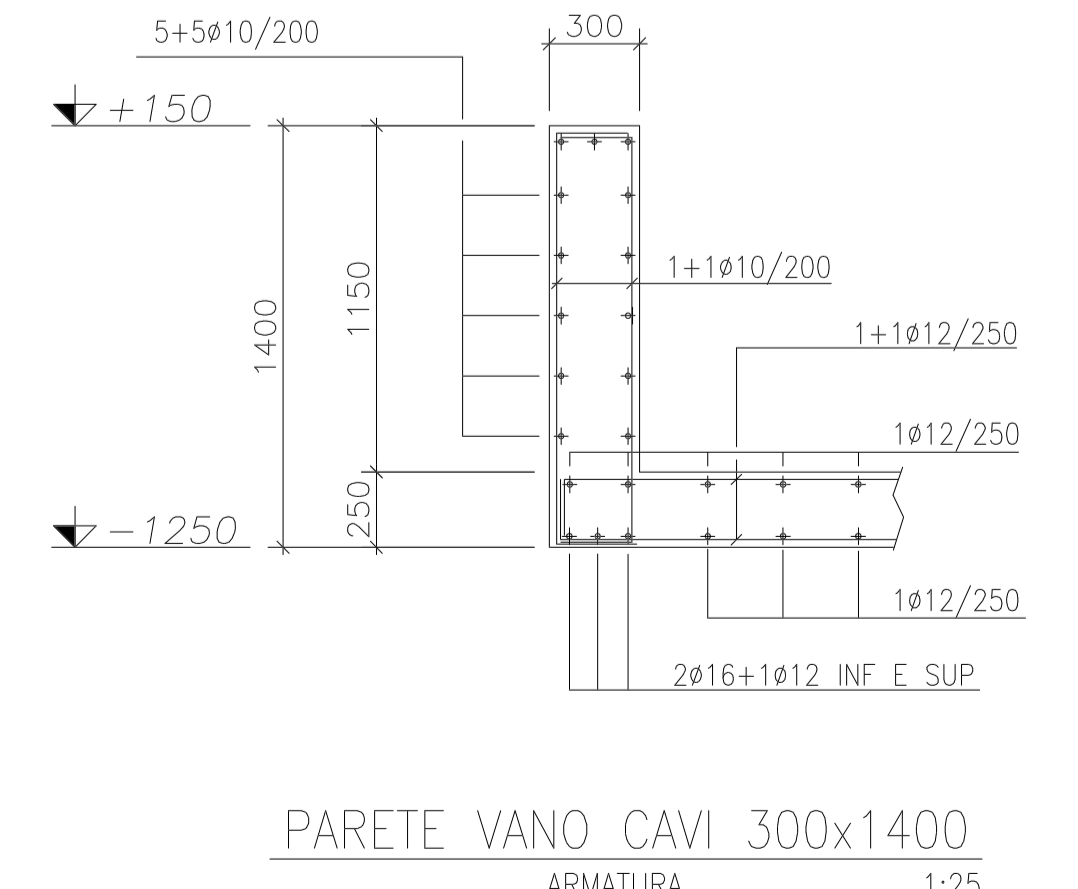
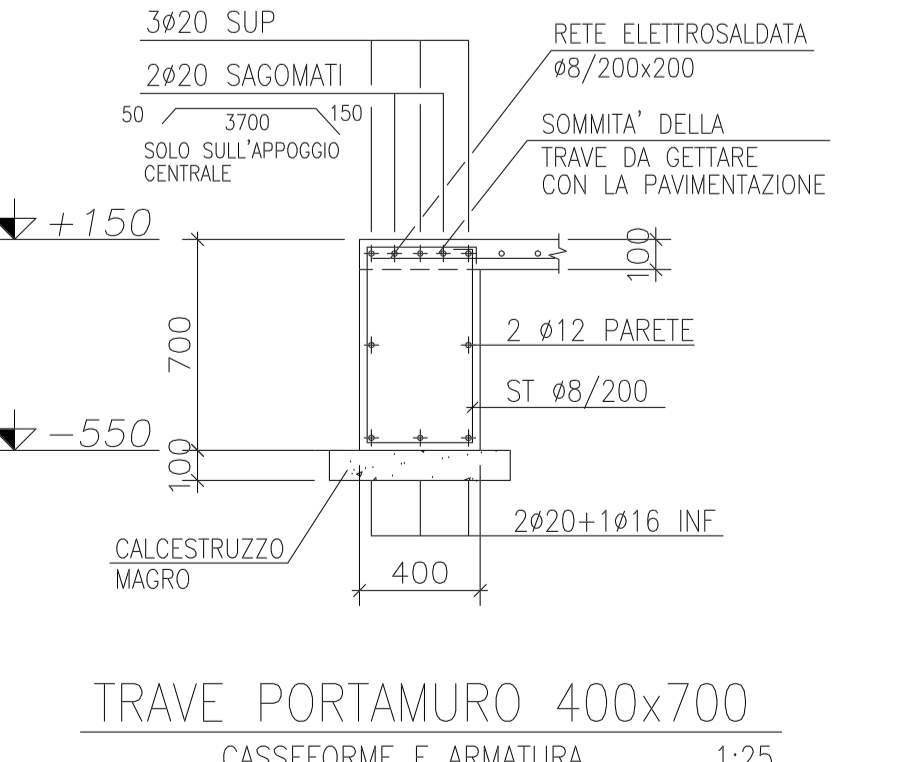
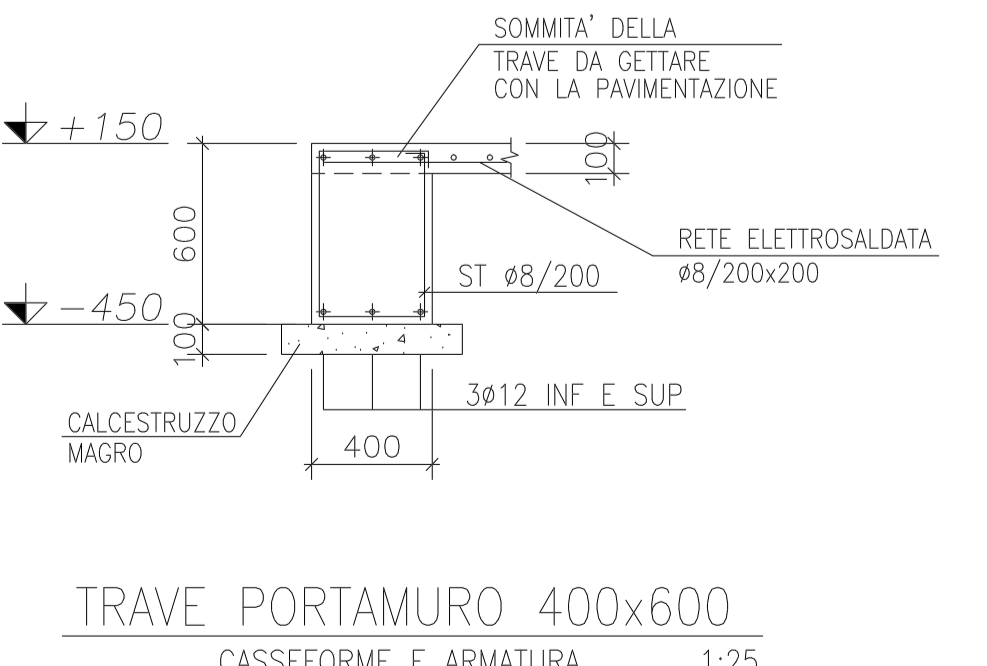
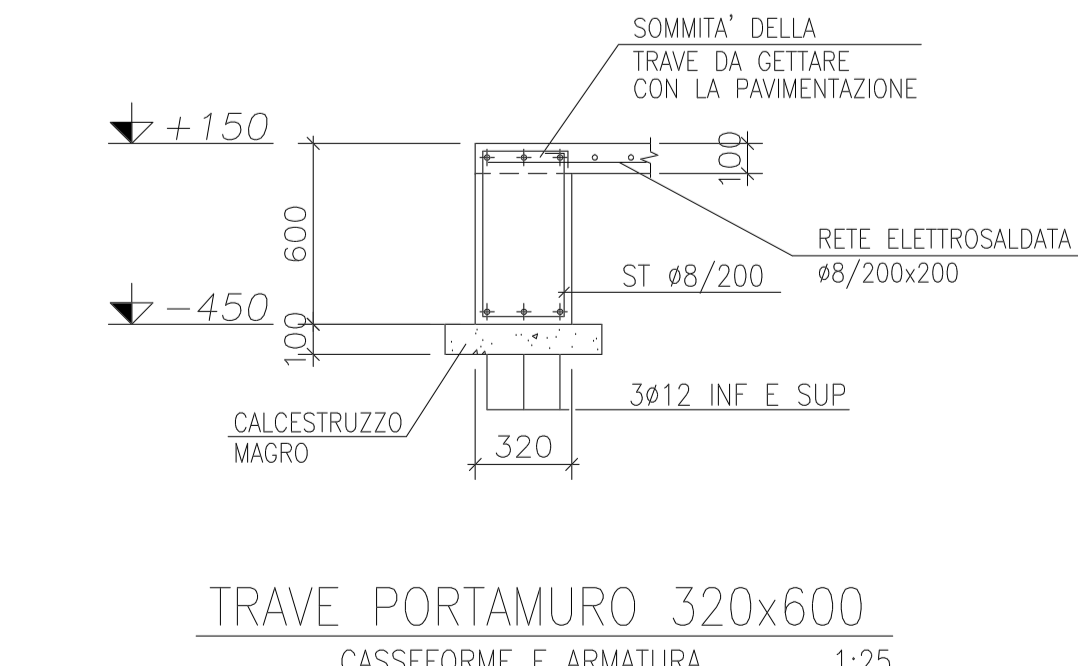
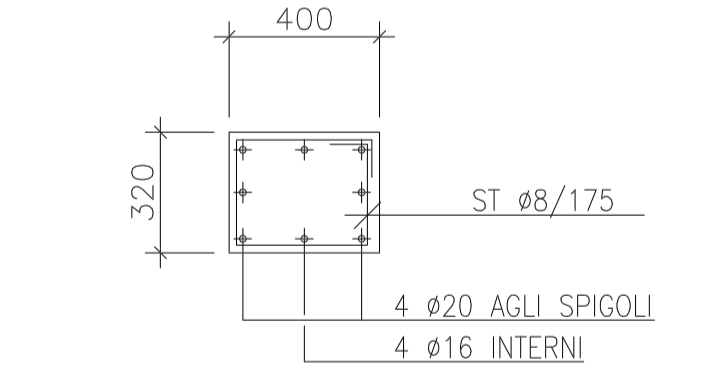


PLINTO TIPO "C"
CASSEFORME E ARMATURA 1:25



PLINTO TIPO "D"
CASSEFORME E ARMATURA 1:25

PIL. 2-14, 32-44
ARMATURA TIPICA PER TUTTA L'ALTEZZA 1:20



Rev.	DATA	DESCRIZIONE	PREL. ELENCO	PREL. APPROV.	SCOPULUM APPROVATO
0	13.10.00	EMESIONE			

Snamprogetti Sud

DIS. N. 30-CE-A-12055
Fg. 1 di 1

ENI S.p.A. - Divisione AGIP
RAFFINERIA AGIP PETROLI TARANTO
AMPLIAMENTO PARCO SERBATOI

COMM. 725200
Rev. 01

FABBRICATO MULTIUSO
OPERE IN CEMENTO ARMATO
ARMATURA FONDAZIONI

SCALA 1:100
SCOPULUM A. SOTTINQUA DAL